

Garden Tractors and Parts on eBay

GTtalk → Barn → Lawn & Garden Tractors by Make → Bolens Tractor Forum



My GK

Started by Philgk, Nov 12, 2017 07:51 PM

[bolens,](#) [grounds keeper,](#) [gk960,](#)

Page 2 of 8

wilberj OFFLINE

Posted November 13, 2017 - 09:05 PM

Philgk, on 13 Nov 2017 - 9:00 PM, said:

I thought I'd share the awesome pictures i found on the web. Concept grounds keepers.

I have talked to the guy who help design the GK. I'll see if I can find his story about it and post it.

Philgk ONLINE

Posted November 13, 2017 - 09:22 PM

That's totally awesome! I love knowing those stories and the history behind the designs. Did he work for FMC? FMC made a ton of unique ag equipment. I'm a big fan. If i can say that without sounding totally crazy.

fonz3482 OFFLINE

Posted November 14, 2017 - 05:44 AM

Philgk being a "Big Fan" of Bolens isn't weird at all.... Everyone starts with their 1st Bolens purchase and then they get a thing called the Bolens Bug!! The Bolens Bug is a disease that wives, girlfriends, friends and family don't generally understand... Once the disease fully kicks in the Bolens will start to multiply and fill all your free space in your garage, shop or shed! You will spend countless hours searching, chasing, Buying and repairing/restoring Bolens equipment! Vacations will no longer be leisurely trips to see scenery, visit an amusement park or a historical place. Once the Bolens Bug kicks in Vacation planning starts with a Craigslist search for Bolens treasures, then you make a deal with the seller and plan your vacation around the town/city the Bolens is for sale in..... It happens to the best of us and there is all different levels of it! Just ask Jerome, he has it BAD! Or ask my Wife! LOL. Anytime I plan a spontaneous trip away from home for my wife and I she automatically knows I'm chasing something Bolens! Good luck with the GK and the disease! Were all here to help you through it!

Austen OFFLINE

Posted November 14, 2017 - 12:44 PM

Good looking machine, congrats! 🎉🎉🎉 I'll bet it's a hoot to operate. Keep us posted. Looks like a fun project and something that will meet your intentions well.

wilberj OFFLINE

Posted November 14, 2017 - 05:32 PM

fonz3482, on 14 Nov 2017 - 05:44 AM, said:

Philgk being a "Big Fan" of Bolens isn't weird at all.... Everyone starts with their 1st Bolens purchase and then they get a thing called the Bolens Bug!! The Bolens Bug is a disease that wives, girlfriends, friends and family don't generally understand... Once the disease fully kicks in the Bolens will start to multiply and fill all your free space in your garage, shop or shed! You will spend countless hours searching, chasing, Buying and repairing/restoring Bolens equipment! Vacations will no longer be leisurely trips to see scenery, visit an

amusement park or a historical place. **Once the Bolens Bug kicks in Vacation planning starts with a Craigslist search for Bolens treasures, then you make a deal with the seller and plan your vacation around the town/city the Bolens is for sale in.....** It happens to the best of us and there is all different levels of it! Just ask Jerome, he has it BAD! Or ask my Wife! LOL. Anytime I plan a spontaneous trip away from home for my wife and I she automatically knows I'm chasing something Bolens! Good luck with the GK and the disease! Were all here to help you through it!

Lol I have so done that.

Philgk ONLINE

Posted November 14, 2017 - 06:56 PM

I new I **was** feeling well. :) Thanks for the diagnosis.
Thanks all.

jpswift1 OFFLINE

Posted November 14, 2017 - 10:59 PM

wilberj, on 13 Nov 2017 - 9:05 PM, said:

I have talked to the guy who help design the GK. I'll see if I can find his story about it and post it.

I'd LOVE to hear it too! That would be wonderful. I recently found a picture that I framed which was purchased from a cool website called, historicalimages.com It was an original black and white photograph of two guys working on putting the Bolens GK's together on the assembly line at the Bolens factory. I'll snap a pic of it and share it with everyone.

fonz3482, on 14 Nov 2017 - 05:44 AM, said:

Philgk being a "Big Fan" of Bolens isn't weird at all.... Everyone starts with their 1st Bolens purchase and then they get a thing called the Bolens Bug!! The Bolens Bug is a disease that wives, girlfriends, friends and family don't generally understand... Once the disease fully kicks in the Bolens will start to multiply and fill all your free space in your garage, shop or shed! You will spend countless hours searching, chasing, Buying and repairing/restoring Bolens equipment! Vacations will no longer be leisurely trips to see scenery, visit an amusement park or a historical place. **Once the Bolens Bug kicks in Vacation planning starts with a Craigslist search for Bolens treasures, then you make a deal with the seller and plan your vacation around the town/city the Bolens is for sale in.....** It happens to the best of us and there is all different levels of it! Just ask Jerome, he has it BAD! Or ask my Wife! LOL. Anytime I plan a spontaneous trip away from home for my wife and I she automatically knows I'm chasing something Bolens! Good luck with the GK and the disease! Were all here to help you through it!

I think this is the bug you get with any garden tractor purchase. I have my Massey Ferguson 1855, Case 224, Ford [LGT 195](#), Sears FF/20, Cub Cadet 2082 Super Garden Tractor and I can barely find time for all of these. I'm thrilled that Phil bought my GK's and can give them the time and attention they deserve. Again, great work, Phil!!!

 Edited by jpswift1, November 14, 2017 - 10:59 PM.

Philgk ONLINE

Posted December 02, 2017 - 07:43 PM

This is never a good sign when draining a gear box - see attached movie. (Use QuickTime Player to open). This is water from the GK snowblower gearbox. Surprisingly the gearbox interior was not in that bad of shape. Cleaned the box out, added an elbow to the cover (so I could actually access it), sealed it up and back in business.

Attached Thumbnails

 Edited by Philgk, December 02, 2017 - 08:47 PM.

Philgk ONLINE

Posted December 02, 2017 - 07:54 PM

The chute on the blower was cracked into pieces. I had some guys weld it up for me. It is cast aluminum so it's kind of hard to weld. The sand that is caught in the pockets causes issues when welding. Anyways, I used some RTV to isolate the aluminum from the blower housing. I also changed the way it mounts to the housing. The original design had a bolt coming through the housing into a tapped hole in the cast aluminum. The aluminum was taking all of the punishment. Both of the corners with the tapped holes were cracked off the chute completely. Someone had taken sheet metal screws and RTV and re-fastened the chute to the housing. It worked and was actually pretty hard to remove. I created a clamp design with rubber pads adhered to the bottom so there is no metal to metal contact between the chute and the housing. Not too pretty but it will work for this year.

Attached Thumbnails



([https://gardentractortalk.com/forums/uploads/monthly_12_2017/post-](https://gardentractortalk.com/forums/uploads/monthly_12_2017/post-88568-0-17241900-1512258752.jpg)

[88568-0-17241900-1512258752.jpg](https://gardentractortalk.com/forums/uploads/monthly_12_2017/post-88568-0-17241900-1512258752.jpg))



([https://gardentractortalk.com/forums/uploads/monthly_12_2017/post-](https://gardentractortalk.com/forums/uploads/monthly_12_2017/post-88568-0-24534500-1512258783.jpg)

[88568-0-24534500-1512258783.jpg](https://gardentractortalk.com/forums/uploads/monthly_12_2017/post-88568-0-24534500-1512258783.jpg))

▲ Edited by Philgk, December 02, 2017 - 08:49 PM.

Philgk ONLINE

Posted December 02, 2017 - 08:02 PM

I replaced the lower second stage drive sprocket. It had been eaten by mouse urine. The #50 chain was completely eaten in half. The sprocket was toast. I removed the idler, blasted and painted it. I keep having to stop and remind myself that I'm not restoring this machine but just making it mechanically sound. It's easy to get off on tangents. The auger drive chains are #40 chain. I did not go through the spring clutch thingy (technical term) that protects the auger drives. I'm hoping it won't give me any issues this season. I'll tear it apart next year. Oh, and yes I do love never-seize.

Attached Thumbnails



([https://gardentractortalk.com/forums/uploads/monthly_12_2017/post-](https://gardentractortalk.com/forums/uploads/monthly_12_2017/post-88568-0-48419600-1512259129.jpg)

[88568-0-48419600-1512259129.jpg](https://gardentractortalk.com/forums/uploads/monthly_12_2017/post-88568-0-48419600-1512259129.jpg))



(https://gardentractortalk.com/forums/uploads/monthly_12_2017/post-

88568-0-73225700-1512259164.jpg)



(https://gardentractortalk.com/forums/uploads/monthly_12_2017/post-

88568-0-52297900-1512259192.jpg)



(https://gardentractortalk.com/forums/uploads/monthly_12_2017/post-

88568-0-78418600-1512259260.jpg)

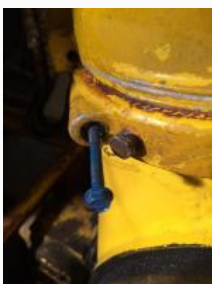
▲ Edited by Philgk, December 02, 2017 - 08:03 PM.

Philgk ONLINE

Posted December 02, 2017 - 08:11 PM

Got the chute back together. Cool assembly with the Teflon cord inside. Just follow what the manual tells you to do. Put a screw in the end and work the chute back and forth. The cord goes right in. Chute rotating - see attached video (watch with QuickTime Player).

Attached Thumbnails



(https://gardentractortalk.com/forums/uploads/monthly_12_2017/post-

88568-0-45328100-1512259495.jpg)

▲ Edited by Philgk, December 02, 2017 - 08:27 PM.

Philgk ONLINE

Posted December 02, 2017 - 08:23 PM

Dry running machine. (Use QuickTime to open)

 Edited by Philgk, December 02, 2017 - 08:23 PM.

Philgk ONLINE

Posted December 02, 2017 - 08:28 PM

Who is the resident expert on Wisconsin THD engines? I am not familiar with the governor and magnetos. I just want to make sure i've got the engine set up correctly.

jpswift1 OFFLINE

Posted December 06, 2017 - 01:26 AM

Phil,

I'm so happy to see how you've given this machine such a great home. It looks and sounds great! I can't wait to see how it'll perform. I hear we're supposed to be getting hit with some pretty heavy snow 1 to 1-1/2 feet, so it looks like you might be giving it a shake down run very soon.

Philgk ONLINE

Posted December 28, 2017 - 02:27 PM

frozen gearbox this morning in 6° winter wonderland. Took me a while to figure out what was wrong. The tractor would only turn in one direction. The steering gearbox was the only thing I really hadn't gone through yet. In the spring (if my patience hold out) I will be replacing the GK steering gearbox and valve with a more modern hydraulic steering valve to make it more robust and dependable. Here's what I found in the gearbox.



[\(https://gardentractortalk.com/forums/gallery/image/39581-gk-gb/\)](https://gardentractortalk.com/forums/gallery/image/39581-gk-gb/)



[\(https://gardentractortalk.com/forums/gallery/image/39580-gk-gb/\)](https://gardentractortalk.com/forums/gallery/image/39580-gk-gb/)

I chipped the ice out and removed as much of the (I can only presume that the goose poop in my gearbox was old gear oil) oil. I re-lubed the box and replaced the cover. good as new (with 1/2 rotation of play in the steering wheel). 🤖



[\(https://gardentractortalk.com/forums/gallery/image/39582-gk-gb/\)](https://gardentractortalk.com/forums/gallery/image/39582-gk-gb/)

After two hours of messing with it in the cold I finally got to clear my driveway. Not a ton of snow today but still fun. GK Videos on YouTube.

https://www.youtube.com/channel/UCttio_IImzLD9Y-n7_dNWGg (https://www.youtube.com/channel/UCttio_IImzLD9Y-n7_dNWGg)

Thanks,
Phil

▲ Edited by Philgk, December 28, 2017 - 09:33 PM.

● Barn → Lawn & Garden Tractors by Make → Bolens Tractor Forum →
Bolens Transaxle cleaning solvents?
Started by BolensNewb88, Mar 29, 2020  bolens, 1000, 600, 800, wisconsin and 5 more...

5 replies
119 views



29 Chev
Mar 29, 2020

- Barn → Lawn & Garden Tractors by Make → Bolens Tractor Forum →
Bolens 1656 H-16 tiller
 Started by rayford52, Mar 18, 2020 bolens, tiller, reverse, tines and 2 more...
 5 replies
 123 views Doxey
 Mar 19, 2020
- FOR SALE** Trash and Treasures → For Sale / Trade / Wanted → Tractors →
1963 BOLENS ESTATE KEEPER
 Started by Philgk, Jan 11, 2020 bolens, estate keeper, 1963
 0 replies
 0 views Philgk
 Jan 11, 2020
- Barn → Walk Behind Garden Tractor Forum →
Bolens Power Ho variable drive sheave
 Started by JeffDevisser, Dec 25, 2019 bolens, power ho and 2 more...
 3 replies
 127 views JeffDevisser
 Dec 30, 2019
- Barn → Craigslist / Ebay / Kijiji Finds →
Bolens Grounds Keeper in Northern Idaho
 Started by Mark 149 J., Dec 14, 2019 bolens, grounds keeper
 2 replies
 67 views Mark 149 J.
 Dec 14, 2019

GTtalk → Barn → Lawn & Garden Tractors by Make → Bolens Tractor Forum

Follow Us

- [Google+](#)
- [Youtube](#)
- [Twitter](#)
- [Facebook](#)

Network

[Garden Tractor Talk](#)

Community Links

- [Member Map](#)
- [Become a Site Supporter](#)
- [GTtalk Home](#)
- [GTtalk Forums](#)

Site Links

- [About Us](#)
- [Terms of Service](#)
- [Privacy Policy](#)
- [Contact Us](#)