

Choose the

ROSEMAN MOWER

that You Prefer

A ROSEMAN GANG MOWER FOR EVERY NEED

Whatever your mowing problem . . . from smooth championship fairway turf to high-cut roughs or mowing dew-covered wet turf in the early morning or at night . . . there is a Roseman Gang Mower designed to mow your turf areas efficiently and beautifully and at least possible cost. Models are available in Hollow Roller and Wheel types and in 3, 5, 7 and 9 gang sizes.

Elimination of hand trimming, improved turf, non-breakable construction and lowest annual upkeep costs are added Roseman bonus features.

Write, phone or mail the attached coupon for descriptive literature, prices and availabilities — AND MAKE YOUR NEXT GANG ROSEMAN!



Roseman Mark IV
Hi-Speed-Reel
Hollow Roller Drive
Fairway Mower



Roseman
Hi-Cut
Rough Mower



Roseman
Hollow Roller Drive
Fairway Mower



ROSEMAN MOWER CORPORATION

2300 W. Lake Ave., Glenview, Ill., U.S.A.
Nation-Wide Sales and Service

MAIL THIS COUPON TODAY!

ROSEMAN Mower Corp.

2300 W. Lake Ave., Glenview, Ill., U.S.A.

Please send me literature, prices and availabilities on Roseman Gang Mowers. I am especially interested in the following models:

- | | |
|--|---|
| <input type="checkbox"/> Mark IV
Fairway Mower | <input type="checkbox"/> Hollow Roller Drive
Fairway Mower |
| <input type="checkbox"/> Rear Wheel Drive
Fairway Mower | <input type="checkbox"/> Hi-Cut Rough
Mower |

Name _____
Position _____ Club _____
Address _____
City _____ State _____

THESE 3 FORE-PAR SIGNS
WILL KEEP TRAFFIC
WHERE YOU WANT IT!



... and they never need repainting



EXCLUSIVE DESIGNS
in "Tee to Green Accessories"

- Markers
- Flag Poles
- Flags
- Signs
- Plaques
- Ball Washers
- Practice Green Markers

PERSONALIZED IF YOU WISH
for that distinctive elegant look

FORE-PAR MANUFACTURING CO.

Foremost in Golf Course Equipment
P.O. Box 126, Laguna Beach, Calif. 92652
Area Code 714 494-5282
Write for brochure and supplier's name

The top 50 players on the 1963 PGA circuit made \$18,000 or more . . . This includes official and unofficial prizes . . . If you don't think that unofficial loot adds up, consider these statistics . . . Mason Rudolph and Julius Boros each earned more than \$7,000 in unrecognized currency, George Knudson went over the \$6,000 mark and a total of 13 players earned more than \$4,000 . . . National Amputee Championship to be played Aug. 19-22 at Winged Foot in Mamaroneck, N. Y. . . . Defending champion, Wally Baskovitch, lost his left leg when he was 12 but didn't take up golf until he was 33 . . . He has finished in the top ten in this tournament ten times, twice taking runnerup honors and finishing third two other times . . . Last year at Detroit he shot 77-78-78-233.

All-American Intercollegiate Championship to be played Mar. 25-28 at Pine Forest CC in Houston . . . Contestants play for six different titles in this 72-hole event . . . These include four team championships . . . Fourteen teams will compete in the 10-year old All-America . . . At the conclusion of the tourna-

TREE TOOLS

- Every tool you need for the care and maintenance of trees and shrubs. Pruning saws, power saws, pole pruners, pruning shears, etc.

Write for our Complete Catalog

George A. Davis Inc.

5440 Northwest Highway, Chicago 30, Illinois

FULLY AUTOMATIC SPRINKLING FOR **YOUR** GOLF COURSE!



PROVED IN THE FIELD
with **AQUA-DIAL** Equipment ...

Landscapes that are always inviting and usable, never dry and never soggy—require a scientific watering program.

An Aqua-Dial system is a scientific watering supervisor which may be set to precisely water the landscape at night or in the early morning hours when water pressures are usually highest, evaporation of valuable water lowest, and wind distortion negligible.

Aqua-Dial's complete line of turf irrigation equipment offers many valves, sprinklers, and automatic controller combinations, ideally suited to meet the exacting demands of golf courses, parks, and other similar large turf areas.

Whether converting an existing manual system, or designing a completely new one, club members and stockholders all share in the benefits of investing in an Aqua-Dial Automatic Sprinkler System.

For more detailed information please contact one of these offices or factory, Newport Beach, Calif.

P. O. BOX 606
ST. CATHARINES
ONTARIO, CANADA

920 BERING AVE.
HURST, TEXAS

BOX 63, 1485 BAYSHORE
SAN FRANCISCO, CALIF.

67 CLINTON STREET
NEWARK, NEW JERSEY

P. O. BOX 1325
NEWPORT BEACH, CALIF.



THIS
GEARED SPRINKLER
WITH 190' DIAMETER
COVERAGE



**WITH
THIS**
VALVE



**AND
THIS**
CONTROLLER

WILL CONVERT
YOUR QC VALVE SYSTEM TO
FULLY AUTOMATIC!



AQUA-DIAL

The **QUALITY** Line
of Sprinkler Equipment

Lewis Line

"REGULATION" WASHER

- Operates on proven paddle action
- Weather and wear resistant, inside and out
- Quick, thorough cleaning action
- Virtually maintenance-free
- Economically priced

A quality-built washer with molded aluminum alloy casing, plus Nylon brushes and paddle. Mounts on any 1 1/4" pipe. Cleans balls completely in a matter of seconds.



"PIGGY BACK" Mounting

Double your washing capacity at tees by mounting 2 washers back to back on single pipe.

Consult with your dealer or send for complete catalog today.



CONTAINER DEVELOPMENT CORP.
MONROE STREET • WATERTOWN, WISCONSIN

ment. Harvey Penick, Austin CC pro and U. of Texas coach for 35 years, will be given a special citation . . . Robert Brian Dawson of the English Sports Turf research institute, known to many American agronomists, retired at the end of 1963 . . . Lakewood CC, Natick, Mass., originally known as CC of Natick, to have lights in 1964, according to Diversified Industries, which recently purchased it . . . The 6,737-yard course will be the second standard layout in the U. S. to be fully lighted.

Bob Baldock, Fresno, Calif., architect, reports that he has these courses under construction which will be opened some time during 1964: Las Robles Greens, Thousand Oaks; Oakland Muny; Alta Sierra, Grass Valley; Lindale Public, Sacramento; Comstock Public, Davis; Rohnert Park Public; and Skywest Public, Hayward . . . All of these are in California . . . Baldock also is working on Reno Public and Henderson G & CC, both in Nevada.

Last time the Open was played in Washington, D. C. was in 1921 when Long Jim Barnes shot 289 to win at Columbia CC. . . . A total of 21 Southern Calif. GCSA members carry handicaps of 10

AQUA-GRO

Blended Non-Ionic Organic Wetting Agents
(100% active ingredients)

stoma-seal

CHEMICAL CONTROL OF WILT

New for 1964

AQUA-T

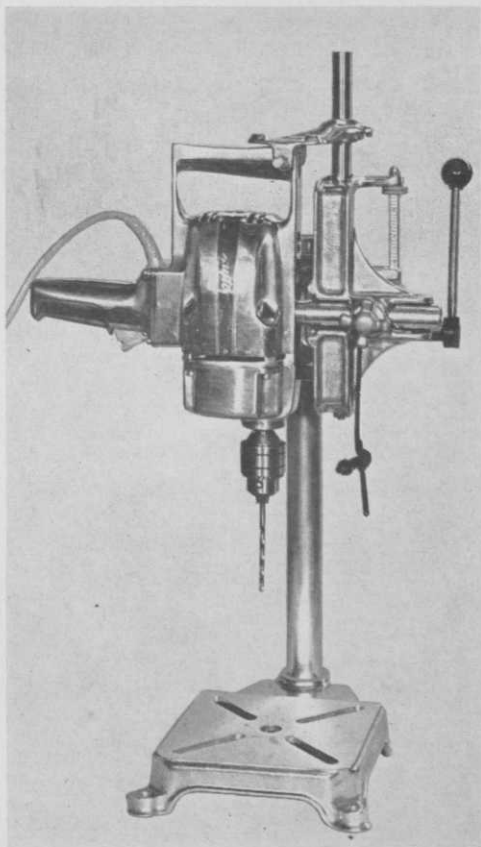
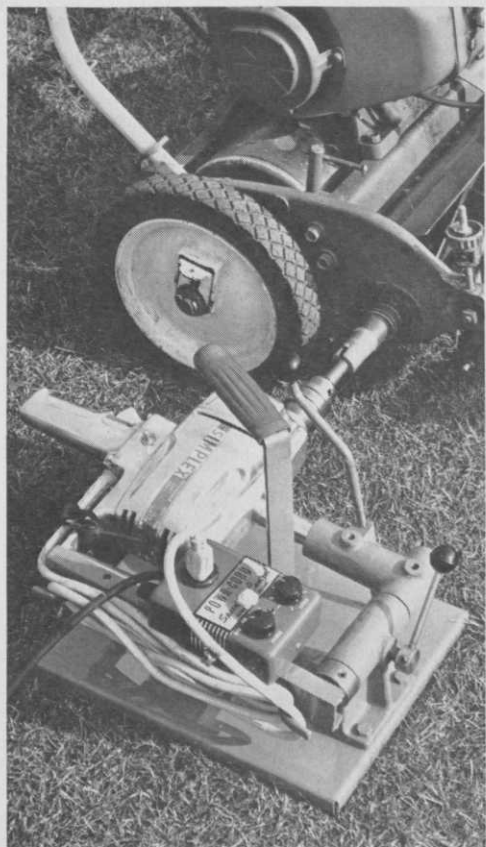
Non-Ionic Organic
Soil Wetting Agent

(100% ACTIVE INGREDIENT)

AQUATROLS' PMA

Liquid Turf Fungicide

Aquatrols Corporation of America 217 Atlantic Ave., Camden, N. J.



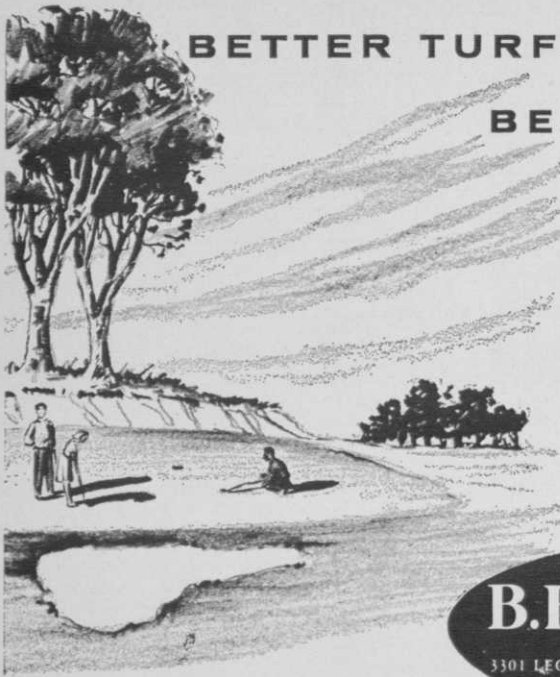
It's a lapping machine... It's a utility drill...

It's the new SIMPLEX 175

Now, get two, or three, valuable machines in one. The Simplex 175 is the easiest, most economical way to keep reel mowers in top cutting condition during the busy mowing season. It's also a big $\frac{1}{2}$ " portable drill for use anywhere. (Add the drill-press stand and you have a precision drill-press for your shop). The Simplex 175 has another feature you've always wanted — variable speed control for lapping-in big gang mowers or small greensmowers at the best speed for each, not too fast or too slow. Send for full information. Order now for early delivery.

THE FATE-ROOT-HEATH COMPANY

Special Products Division • Dept. G-2 • Plymouth, Ohio



BETTER TURF MAINTENANCE STARTS WITH BEST EQUIPMENT

Every golf course superintendent has enough problems without compounding them through use of mediocre or worn out equipment. Since creating and sustaining greens, tees, and fairways in consistently superb playing condition is an absolute essential, it follows that the best equipment for the work is also absolutely essential. B. Hayman Co. is constantly searching for the finest equipment based on lasting quality and performance. And we offer the quickest and most thorough parts availability service. All inquiries promptly answered.

B. HAYMAN CO. INC.

Since 1876

3301 LEONIS BLVD. LOS ANGELES 54, CAL.

Telephone: LUdlow 3-1851

or lower . . . Maybe those fellows are in the wrong business . . . Dave Gill, St. Charles, Ill., architect, recently completed a preliminary study for a golf course for the town of Glen Ellyn, Ill.

The Crosby Tournament, played last month on Monterey, peninsula courses gave circuit pros a chance to review their swings via a portable television recorder . . . Within seconds, each recorded swing could be double checked by the player for rough spots . . . Protests over an increase in fees at Passaic County (N. J.) Park Commission courses has caused the board to re-instate 1963 rates . . . All registrants for \$35 season tickets will be photographed and play at Passaic's Wayne course will be limited to 18 holes.

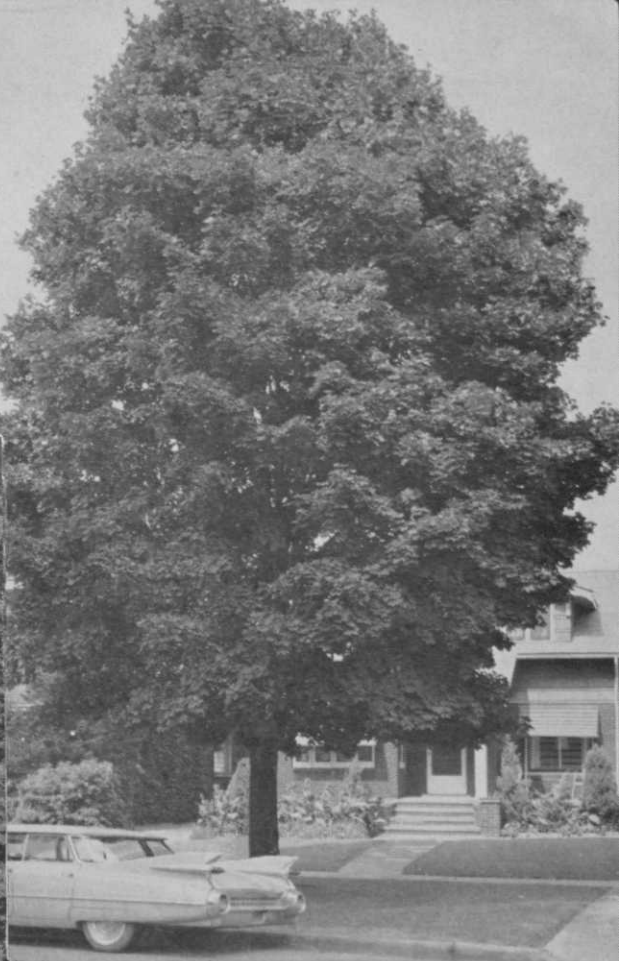
By mid-January, only two former winners of the Tournament of Champions had qualified for the '64 event . . . Jack Nicklaus, defending champion, and Arnie Palmer, victor in 1962, are all set . . . Still missing from the field are these past winners: Al Besselink, Art Wall, Jr., Gene Littler, Stan Leonard, Mike Souchak, Jerry Barber and Sam Snead . . . If qualifiers continue at the current rate it's possible a record number of champions

will compete in the 12th annual tournament, Apr. 30-May 3 . . . Telecasts of the \$50,000 Doral Invitational in Miami, Fla., have been planned for Mar. 21-22.

Pre-Christmas ticket sales for the PGA Championship, to be played in July at the Columbus (O.) CC, exceeded \$110,000 . . . This may be the best attended Championship in history since Jack Nicklaus, a hometown boy, is the defending PGA champion . . . National Baseball players golf tournament will be played at Miami Springs CC, Feb. 20-23 . . . Some 50 active players and quite a few past greats will be seeking to win the title now held by Jim Hearn, the old Philly and Giant pitcher . . . He shot a 301 in winning the championship last year . . . This will be the 24th year the ballplayers hold their golf jamboree.

In 1963, nearly 175,000 youngsters played golf in high school and college sponsored programs . . . The Chicago District GA reports that 752,471 rounds were played on 37 of its member club courses last year . . . In 1961, these same clubs registered 647,382 rounds . . . That's a difference of 144,841 rounds — and quite a difference . . . Green Acres,

COLE'S SKYLINE (Plant Pat. 1619) An outstanding product of Cole's expert selective breeding, this stately, symmetrical variety is an ideal lawn or street tree that grows to about 40 feet. It is one of four modern Cole honey-locusts that transplant easily, grow straight *without staking*, cause no ground litter, are widely adaptable and highly resistant to insects, drought and city conditions.



CLEVELAND NORWAY MAPLE A very vigorous improved selection from an old favorite. Foliage has richer color and more substance than other varieties. Widely spaced in our nurseries for fully-formed heads. Withstands drought and city conditions. Matures at approximately 50 feet.

Now you can select the trees you need to fit your plans from Cole's Improved Old Favorites and Patented Modern Varieties

When you want special-purpose trees that fit your landscape plans and your budget call the tree specialists—Cole Nursery Company. You can get the right type, size, shape and ultimate height you want in ample quantity from Ohio's largest wholesale nursery—healthy, strong-rooted thriving trees. Write for a catalog or special quotation.

THE COLE NURSERY CO.

Phone Elmwood 2-3121

HEADQUARTERS: 2000 W. Jackson St., Painesville, Ohio
CIRCLEVILLE DIVISION: Old Route 23, Circleville, Ohio



COLE'S IMPERIAL (P.P. 1605) Matures at 35 feet. Ideal shade tree for golf courses.



POPULAR CYCLONE BROADCAST LAWN SPREADER
Fast. Accurate. Breezes through every spreading job. Precision spreads pelleted and granular chemicals, seed, ice melters, etc. Soft, tapered-edge spread puts an end to streaks and double overlaps. Uniformly covers up to 8-ft. swath depending on materials. Broadcasts as little as 4 ounces of some pesticides or as much as 40 lbs. of some fertilizers per 1,000 sq. ft.

See your distributor or write for information on other Cyclone models.

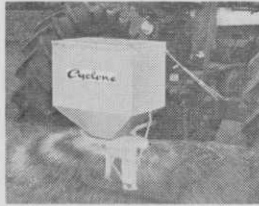
THE CYCLONE SEEDER CO., INC.

Urbana 60, Indiana

THERE'S A

Cyclone

FOR ALMOST EVERY SPREADING AND SEEDING JOB



CYCLONE PTO MODEL S-3 BROADCAST FERTILIZER DISTRIBUTOR AND SEED SOWER
 Spreads up to 30-ft. swath . . . fast and accurate for seeding or applying fertilizer. Operates from heavy-duty flexible drive shaft which fits tractor PTO. Double agitator, easy-setting rate gauge, positive shut-off. Mounts low for easy filling — on and off with just 3 bolts. 1, 1/2, 3 and 5-bushel sizes.



FAMOUS CYCLONE HAND BROADCAST SEED SOWER
 Accurately sows smooth grass seed and grain . . . broadcasts pelleted fertilizers. Covers up to 28-ft. wide, depending on materials being spread. Skips, streaks and double-overlaps are virtually eliminated with soft, tapered-edge spread pattern. Sloping feed floor keeps materials flowing to feed gate. Has exclusive double-oscillating feed . . . spring-loaded instant on-off control.

Northbrook, Ill., was the busiest of the reporting clubs . . . It claimed more than 27,000 rounds in 1963 . . . Minnesota GCSA to hold its annual educational conference Mar. 4-6 in the Capp Towers Motel in Minneapolis.

The annual Southern Turfgrass Association conference is slated for Feb. 23-25 in Memphis . . . Paul Lemon, pro-manager at Green Hills CC, Ravenswood, W. Va., heads the newly formed West Virginia Turfgrass Association . . . Vp is Andy Jones and Margaret Young is secretary-treasurer . . . Betty Jameson recently was appointed to a teaching position at Dorado Beach Hotel club in Puerto Rico . . . She joins head pro, Charlie Beverage, there.

Free membership in Paxton Hollow CC is being offered by Edward Tepper to present and future tenants of three apartment buildings he owns in Germantown section of Philadelphia . . . Santa Ana (Calif.) CC reports that it had ten acres in 1963 . . . That was 11 less than Willowick, also in Santa Ana, claimed . . . Ernie Fortner, pro at Ogdensburg (N.Y.) CC and wintertime resident of Austin, Tex., recently dismantled the Austin CC

layout with a 30-31-61 . . . That's a record for the par 70 Austin course . . . A luxury hotel recently was opened next door to Israel's 18-hole Caesarea G & CC . . . The Caesera course was opened about two years ago.

Don Stewart, 30, supt. of Brookwood CC, Addison, Ill., since 1957, died early in January following an illness of about three months . . . Death was due to a kidney disorder . . . Don, was the son of the late Peter Stewart, one of the founders of the National and Midwest GCSAs, and was supt. at Joliet (Ill.) CC before coming to Brookwood . . . He is survived by his wife, Jane, a brother, Ed, who is supt. at River Forest CC, near Elmhurst, Ill., and a sister.

Robert E. Ross, Jr., who had been at Thunderbird in Palm Springs, Calif., and at Winged Foot, Mamaroneck, N.Y., in recent years as an associate pro, has been named head pro of Bellerive CC in St. Louis . . . Ross has been a professional since 1960 . . . He is a graduate of Rollins College, Winter Park, Fla., and played on that school's golf team . . . Dink Wise, assistant to Chuck Tanis at Olympia Fields (Ill.) CC for the last two years, has been



This pro struggles to break 100

He just plays at golf. He works as an Orangeburg turf irrigation specialist. He knows irrigation—planning, design, installation, and operation. Or if too much water is the problem, he's an expert on the subject of drainage.

Orangeburg manufactures a pipe for all turf services: the new FLINTITE Asbestos Cement line from the world's most modern plant, ideal for large mains; SP Polyethylene Pressure Pipe for tee and green lines, par 3 courses—tough, flexible, guaranteed 20 years;

ABS or PVC Semi-Rigid Plastic Pressure Pipe, light and easy to install for intermediate mains or complete systems; Fibre Under-drain, best for non-pressure drainage (tiling greens, fairway wet spots).

Add Orangeburg's 70-year history of satisfying performance, and you see this pro has plenty going for him. Let him tee off on your problem. Write Dept. G-1.

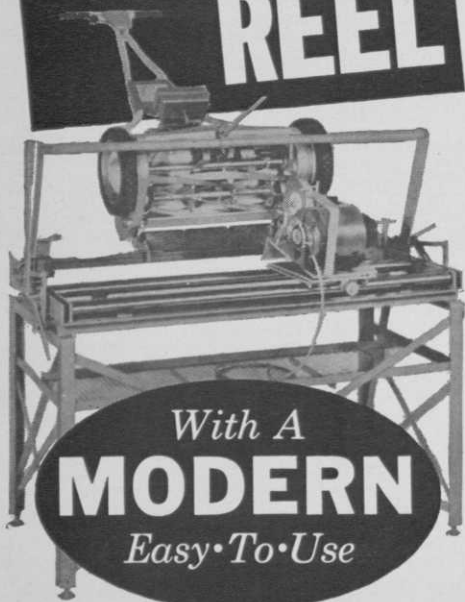
ORANGEBURG[®]
BRAND PIPE



ORANGEBURG MANUFACTURING CO., ORANGEBURG, N. Y.
DIVISION OF THE FLINTKOTE COMPANY, MANUFACTURER
OF AMERICA'S BROADEST LINE OF BUILDING PRODUCTS



No Need to Remove
REEL



With A
MODERN
Easy To Use

Lawn Mower Sharpener

You can sharpen the bedknife and the reel in the mower with a MODERN lawn mower sharpener or you can remove from the mower for separate sharpenings.

NO COMPLEX ADJUSTMENTS

Just raise the entire mower to the proper height. Bring the reel and bedknife into grinding position with a single hand lever . . . and sharpen.

PRECISION RESULTS

The MODERN lawn mower sharpener precision grinds to tolerances of .001 or better, so there's no need for "finish filing".

A MODEL FOR ANY MOWER

MODERN lawn mower sharpeners are available in two sizes. One handles mowers up to 36 inches; the other is capable of sharpening blades up to 53 inches wide. With the optional Rotary Blade Holder, either model will sharpen and balance rotary blades, too.

SEND FOR FREE LITERATURE AND PRICES

FOLEY Manufacturing Company

287-4 Ringer Bldg., Minneapolis 18, Minn.
Please send folder and information on Modern Lawn Mower Sharpener.

NAME _____

ADDRESS _____

CITY _____

STATE _____

named head pro at Danville (Ill.) CC . . . He succeeds the late George Bolesta . . . Wise is a Florida State U. graduate.

Dr. John E. Runnells, 87, who died recently in Plainfield, N.J., was long one of New Jersey's most avid golfers . . . He rarely missed playing in local, state and national Senior events . . . He had a reputation for being able to lose himself in concentration and often played an entire round without saying a single word to his golfing partners . . . The \$60,000, two story colonial pro shop at Plainfield CC will be ready for occupancy this spring . . . Jim Todd has been named pro-manager at Flanders Valley, a Flanders, N.J. park course . . . He moves over from Braidburn in Florham Park, where he had been for 25 years.

John E. O'Connor, Jr., owner and operator of Land of Golf lighted par-3 course and range at 8320 S.W. 8th st., Miami, Fla., has pros from a number of northern clubs using Land of Golf as their winter base . . . O'Connor invites accredited visiting professionals to make use of the range for their teaching and to get their mail and messages at his golf establishment . . . For the sixth consecutive year First Flight Co. puts up prize money for the PGA National GC championship . . . Again, this year, the First Flight purse is \$25,000 . . . All the purses in the PGA club events have been increased considerably in the last four or five years.

Nick Turzian, for seven years assistant to Elly Vines, pro, at Tamarisk CC, Palm Springs, Calif., was named Vines' successor when Elly retired . . . Nick has as teaching associates in the winter Johnny Revolta and Angel de la Torre . . . City of Daytona Beach, Fla., extends contract of Ralph Ebling as general manager and pro of Daytona Beach CC . . . Golf Writers' Association awards plaques to Pebble Beach (Calif.) GC, Firestone CC, Akron, O., and CC of Brookline, Mass., for excellence of working press facilities they have provided at tournaments.

Jacob and Lorraine Mohr and E. G. Lockie are building 18 to Lockie's design at Hampton, Ill. in the Quad-Cities area of Illinois and Iowa . . . Course will be known as Golf-Mohr . . . The area is intensively developed industrially and Golf-Mohr already is working on industrial league programs although it won't